

# Basins and Trays

## Sponge and Ring Basins

CODE	DESCRIPTION	CASE QTY	CASE DIMENSIONS
15-0250	Basin, 250ml	600	18x9x19" (46x23x48cm)
15-0250-C	Basin, 250ml, Clear	600	18x9x19" (46x23x48cm)
15-0250-RD	Basin, 250ml, Red	600	18x9x19" (46x23x48cm)
15-0250-YL	Basin, 250ml, Yellow	600	18x9x19" (46x23x48cm)
15-0500	Basin, 500ml	390	16x11x16" (41x28x40cm)
15-0500-RD	Basin, 500ml, Red	390	16x11x16" (41x28x40cm)
15-0500-YL	Basin, 500ml, Yellow	390	16x11x16" (41x28x40cm)
15-0500-C	Basin, 500ml, Clear	390	16x11x16" (41x28x40cm)
15-1000	Basin, 1000ml	340	20x14x12" (52x34.5x34cm)
15-1000-C	Basin, 1000ml, Clear	340	20x14x12" (52x34.5x34cm)
15-1000-PK	Basin, 1000ml, Pink	340	20x14x12" (52x34.5x34cm)
15-1500	Basin, 1500ml	320	15x15x18" (39x39x45cm)
15-2500	Basin, 2500ml	160	20x10x22" (51x26x57cm)
15-6000	Basin Ring, 6000ml	60	14x14x17" (36x36x44cm)
15-6000-CUS	Basin Ring, 6000ml, Clear	22	14x14x17" (36x36x44cm)
15-6500	Basin Ring, 6500ml	38	14x14x19" (36x36x49cm)
15-9025	Lid Basin, 250ml	300	16x11x16" (41x27.7x40cm)
15-9050	Lid Basin, 500ml	270	19x13x13" (48x32x34cm)
15-9100	Lid Basin, 1000 & 1500ml	160	19x13x13" (38x38x31cm)
15-9250	Lid Basin, 2500ml	120	20x11x18" (53x27x45cm)

### Materials

Polypropylene

### Product Attributes

- Fits standard ring stands
- 15-6000 graduated in ml, cc and oz for ease of measurement
- 15-6500 graduated in cc only

### Sterilization

Non-Sterile: If a product is delivered non-sterile and is ultimately for use in sterile environments, it is intended to be sterilized by the re-packer. This includes further packaging and sterilization according to the validated processes of the re-packer. These products are to be sterilized by ethylene oxide (EO). Other methods of sterilization have not been validated by Alleset.

### Shelf Life

Non-Sterile: Established at 5 years based upon sterile packaged product aging studies and normal warehouse storage conditions. After 5 years, the product should be performance tested to ensure compliance to specifications.

### Product Certifications/Standards

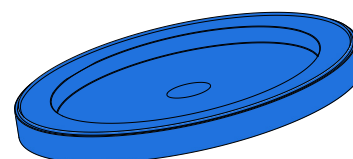
- CE certified as Class I, according to MDR 2017/745 Annex VIII, Rule 2

### Manufacturing Certifications/Registrations

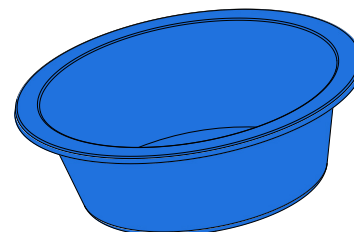
- EN ISO 13485:2016
- Medical Device Single Audit Process Certified

### Storage

- General warehouse conditions



Lid



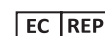
Bowl



Alleset  
4142 Industry Way  
Flowery Branch, GA 30542,  
USA  
www.alleset.com  
SM-TDS-003 2023  
Country of Origin Abbreviations per ISO 3166-1, Alpha-2 Codes.



GRI Medical & Electronic Technology Co., LTD  
1805 Honggao Road,  
314031 Jiaxing, Zhejiang  
PEOPLE'S REPUBLIC OF CHINA  
www.alleset.com  
US FDA Establishment Registration #3004911384



Emergo Europe B.V.  
Westervoortsedijk 60,  
6827 AT Arnhem,  
The Netherlands  
www.emergobyul.com

