

Protective Apparel

ComfortGuard® Scrubs

	CODE	DESCRIPTION	SIZE	CASE QTY	CASE DIMENSIONS
Ⓝ	60-5000	Scrub Top, Short Sleeve w/ Pocket	S	60	15.5x15.5x12.5" (39.5x39.5x32cm)
Ⓝ	60-5001	Scrub Top, Short Sleeve w/ Pocket	M	60	15.5x15.5x12.5" (39.5x39.5x32cm)
Ⓝ	60-5002	Scrub Top, Short Sleeve w/ Pocket	L	60	15.5x15.5x12.5" (39.5x39.5x32cm)
Ⓝ	60-5003	Scrub Top, Short Sleeve w/ Pocket	XL	60	15.5x15.5x12.5" (39.5x39.5x32cm)
Ⓝ	60-5004	Scrub Top, Short Sleeve w/ Pocket	2XL	60	15.5x15.5x12.5" (39.5x39.5x32cm)
Ⓝ	60-5005	Scrub Top, Short Sleeve w/ Pocket	3XL	60	15.5x15.5x12.5" (39.5x39.5x32cm)
Ⓝ	60-5020	Scrub Top, Short Sleeve w/ Pocket, "Soft Version"	S	60	15.5x15.5x12.5" (39.5x39.5x32cm)
Ⓝ	60-5021	Scrub Top, Short Sleeve w/ Pocket, "Soft Version"	M	60	15.5x15.5x12.5" (39.5x39.5x32cm)
Ⓝ	60-5022	Scrub Top, Short Sleeve w/ Pocket, "Soft Version"	L	60	15.5x15.5x12.5" (39.5x39.5x32cm)
Ⓝ	60-5023	Scrub Top, Short Sleeve w/ Pocket, "Soft Version"	XL	60	15.5x15.5x12.5" (39.5x39.5x32cm)
Ⓝ	60-5024	Scrub Top, Short Sleeve w/ Pocket, "Soft Version"	2XL	60	15.5x15.5x12.5" (39.5x39.5x32cm)
Ⓝ	60-5025	Scrub Top, Short Sleeve w/ Pocket, "Soft Version"	3XL	60	18.5x14.5x15.5" (47x36x39.5cm)
Ⓝ	60-5030	Scrub Pant, Tie Waist w/ Pocket, "Soft Version"	S	60	18.5x14.5x15.5" (47x36x39.5cm)
Ⓝ	60-5031	Scrub Pant, Tie Waist w/ Pocket, "Soft Version"	M	60	18.5x14.5x15.5" (47x36x39.5cm)
Ⓝ	60-5032	Scrub Pant, Tie Waist w/ Pocket, "Soft Version"	L	60	18.5x14.5x15.5" (47x36x39.5cm)
Ⓝ	60-5033	Scrub Pant, Tie Waist w/ Pocket, "Soft Version"	XL	60	18.5x14.5x15.5" (47x36x39.5cm)
Ⓝ	60-5034	Scrub Pant, Tie Waist w/ Pocket, "Soft Version"	2XL	60	18.5x14.5x15.5" (47x36x39.5cm)
Ⓝ	60-5035	Scrub Pant, Tie Waist w/ Pocket, "Soft Version"	3XL	60	18.5x14.5x15.5" (47x36x39.5cm)
Ⓝ	60-5040	Scrub Pant, Elastic Waist w/ Pocket, "Soft Version"	S	60	18.5x14.5x15.5" (47x36x39.5cm)
Ⓝ	60-5041	Scrub Pant, Elastic Waist w/ Pocket, "Soft Version"	M	60	18.5x14.5x15.5" (47x36x39.5cm)
Ⓝ	60-5042	Scrub Pant, Elastic Waist w/ Pocket, "Soft Version"	L	60	18.5x14.5x15.5" (47x36x39.5cm)
Ⓝ	60-5043	Scrub Pant, Elastic Waist w/ Pocket, "Soft Version"	XL	60	18.5x14.5x15.5" (47x36x39.5cm)
Ⓝ	60-5044	Scrub Pant, Elastic Waist w/ Pocket, "Soft Version"	2XL	60	18.5x14.5x15.5" (47x36x39.5cm)
Ⓝ	60-5045	Scrub Pant, Elastic Waist w/ Pocket, "Soft Version"	3XL	60	18.5x14.5x15.5" (47x36x39.5cm)
Ⓝ	60-5030E	Scrub Pant, Elastic Waist w/ Pocket	S	60	18.5x14.5x15.5" (47x36x39.5cm)
Ⓝ	60-5031E	Scrub Pant, Elastic Waist w/ Pocket	M	60	18.5x14.5x15.5" (47x36x39.5cm)
Ⓝ	60-5032E	Scrub Pant, Elastic Waist w/ Pocket	L	60	18.5x14.5x15.5" (47x36x39.5cm)
Ⓝ	60-5033E	Scrub Pant, Elastic Waist w/ Pocket	XL	60	18.5x14.5x15.5" (47x36x39.5cm)
Ⓝ	60-5034E	Scrub Pant, Elastic Waist w/ Pocket	2XL	60	18.5x14.5x15.5" (47x36x39.5cm)
Ⓝ	60-5035E	Scrub Pant, Elastic Waist w/ Pocket	3XL	60	18.5x14.5x15.5" (47x36x39.5cm)

Materials

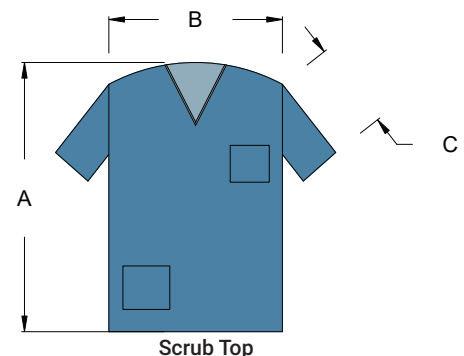
- Multilayered SMS Material with Antistatic Properties and Alcohol Repellency

Product Attributes

- Unisex design
- Scrub top w/ chest and hip pockets
- Scrub pants w/ side and rear pockets

Sterilization

Non-Sterile: If a product is delivered non-sterile and is ultimately for use in sterile environments, it is intended to be sterilized by the re-packager. This includes further packaging and sterilization according to the validated processes of the re-packager. These products are to be sterilized by ethylene oxide (EO). Other methods of sterilization have not been validated by Alleset.



Code	A: Length	B: Chest Width	C: Sleeve Length
60-5000/60-5020	26" (66cm)	22" (55.8cm)	6.5" (16.5cm)
60-5001/60-5021	27.5" (69.8cm)	24" (60.9cm)	7" (18cm)
60-5002/60-5022	27.5" (69.8cm)	26" (66cm)	7" (18cm)
60-5003/60-5023	29.25" (74.2cm)	28" (71.1cm)	7" (18cm)
60-5004/60-5024	30.5" (77.4cm)	29.5" (74.9cm)	7.5" (19cm)
60-5005/60-5025	30.5" (77.4cm)	30.5" (77.4cm)	8" (20cm)
Tolerance	±1" (2.54cm)	±1" (2.54cm)	±0.5" (1.27cm)

Protective Apparel

ComfortGuard® Scrubs

Shelf Life

Non-Sterile: Established at 5 years based upon sterile packaged product aging studies and normal warehouse storage conditions. After 5 years, the product should be performance tested to ensure compliance to specifications.

Product Certifications/Standards

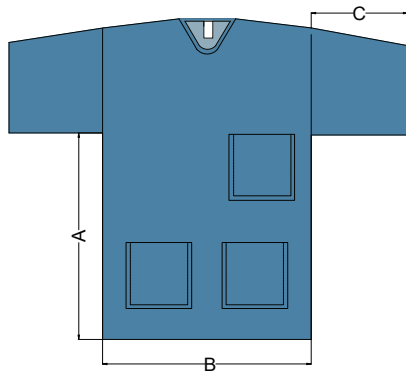
- CE certified as Category 1 PPE per Regulation (EU) 2016/42

Manufacturing Certifications/ Registrations

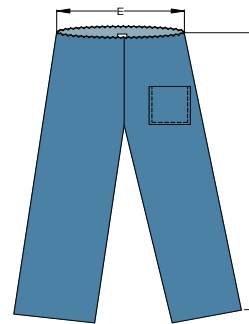
- EN ISO 13485:2016

Storage

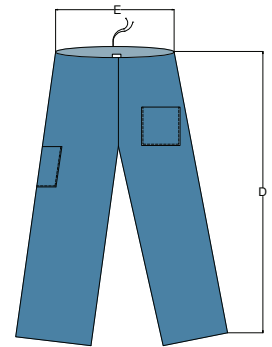
- General warehouse conditions



Scrub Top



Scrub Pants, Elastic Waist



Scrub Pants, Tie Waist

Code	A: Length	B: Chest Width	C: Upper Sleeve Length
TBD	16" (40.6cm)	22" (55.8cm)	6.5" (16.5cm)
TBD	17" (43.1cm)	24" (61cm)	7" (18cm)
TBD	17" (43.1cm)	26" (61cm)	7" (18cm)
TBD	18" (45.7cm)	28" (71cm)	7" (18cm)
TBD	19" (48.2cm)	29.5" (75cm)	7.5" (19cm)
TBD	19" (48.2cm)	30.5" (77.4cm)	8" (20cm)
Tolerance	±1" (2.54cm)	±1" (2.54cm)	±0.5" (1.27cm)

Code	D: Length	E: Waist
60-5030/60-5040/60-5030E	38" (96.5cm)	18.5" (47cm)
60-5031/60-5041/60-5031E	41" (104cm)	20.5" (52cm)
60-5032/60-5042/60-5032E	44" (112cm)	22.5" (57cm)
60-5033/60-5043/60-5033E	46.5" (118cm)	23.5" (59.6cm)
60-5034/60-5044/60-5034E	47.5" (120.6cm)	25" (63.5cm)
60-5035/60-5045/60-5035E	50.5" (128.7cm)	27" (68.5cm)
Tolerance	±1" (2.54cm)	±0.5" (1.27cm)



Alleset
4142 Industry Way
Flowery Branch, GA 30542,
USA
www.alleset.com
SM-TDS-002 2022
Country of Origin Abbreviations per ISO 3166-1, Alpha-2 Codes.



GRI Medical & Electronic Technology Co., LTD
1805 Honggao Road,
314031 Jiaxing, Zhejiang
PEOPLE'S REPUBLIC OF CHINA
www.alleset.com
US FDA Establishment Registration #3004911384



Emergo Europe B.V.
Prinsessegracht 20
2514 AP The Hague
The Netherlands
www.emergobyul.com

